

A large, stylized green leaf graphic on the left side of the page. It features three leaves of varying sizes and orientations, all in a light green color with white outlines. The leaves are attached to a circular base that resembles a stylized 'O' or a ring.

LIV BIO collection 2017

About « livbio »

- We use only 100% GOTS certified organic cotton free from chemicals and toxins;
- Our dyeing is also 100% natural/herbal free from any chemicals. We get inspired from nature and take whatever it offers us;
- Being nice with nature it begins by being fair among us – we follow fair trades practices;
- One goal, to enable people to wear healthy clothes at an affordable price but by staying right to our customers and suppliers.



Why Organic?

- 1.5 billions pounds worth pesticides are used in cotton field every year;
- Toxic chemicals are used to grow and manufacture the materials used to produce your clothes. Not healthy, creates skin and respiratory diseases in long terms;
- Non-polluting process, saves water, air and environment;
- Better quality of yarns if come from organic fibres



Why Herbal Dyes ?

- We use 100% natural herbs which are derived from nature for dyeing since we believe the mother Earth have given us everything to sustain ourselves. So why go the chemicals way;
- It is 100% biodegradable and good for the environment;
- Natural and vibrant range of colors available;
- Natural brightness and softness of the fabric;
- Plants are also used for their medicinal properties (skin care, cardiac tonic, ...)



What we can supply...

- **FABRIC QUALITY**

30s single jersey

40s single jersey

40s interlock jersey

Cotton slub jersey

Linen

Khadi

Poplin

Cambric

Denim

Recycled fabric

What we can supply...

- **GARMENTS STITCHING**

Polo neck t-shirts

Round neck basic/printed

Casual t-shirts / Tank

Hoodies/sweatshirts (women, men)

Tunics women

Track pants (men, women, kid)

Chinos / Short

Innerwear (men, women, kid)

Baby wear (0 to 2 years)

Handloom denim/yarn dyed

Herbal dyes



Sun White



Natural Ecrú



Rust Cream



Nut Cream



Haldi Yellow



Pale Cellary



Dahlia Green



Cherry Pink



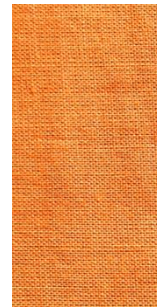
Ash Pink



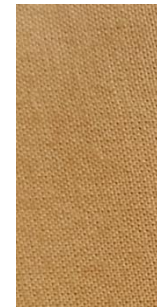
Betel Pink



Okhra Orange



Pomo Orange



Brazil Brown



Beet Maroon



Madder Red



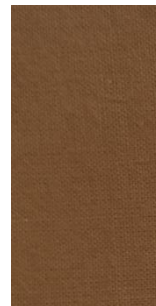
Burnt Grey



Henna Brown



Cutch Brown



Oak Brown



Nile Blue

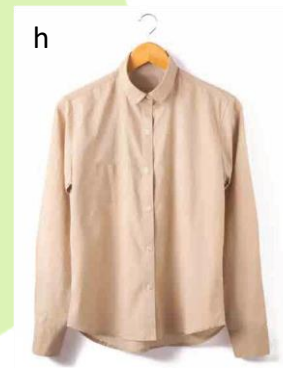


Woad Blue



Chebula Black

Women's garments - Shirt



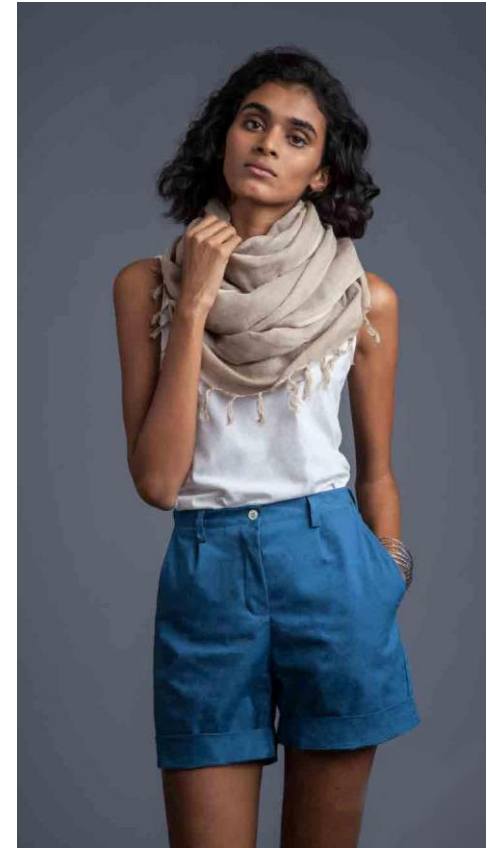
- a- Extra Light Indigo
- b- Light Indigo
- c- Medium Indigo
- d- Black
- e- Red
- f- Dark Indigo
- g- White
- h- Beige
- i- Yellow

Women's garments – T-shirt



- a- Extra Light Indigo
- b- Light Indigo
- c- Yellow
- d- Red
- e- White
- f- Beige
- g- Back

Women's garments – Tank



- a- Extra Light Indigo
- b- Light Indigo
- c- Yellow
- d- Red
- e- White
- f- Beige
- g- Back

Women's garments – Chinos



a



b



c



d



- a- Yellow
- b- Red
- c- Medium Indigo
- d- Back

Women's garments – Short



- a- Beige
- b- Light Indigo
- c- Medium Indigo
- d- Red

Women's garments – Linen shirt



a- Black
b- Light Indigo
c- Light Indigo

Men's garments – Shirt



- a- Extra Light Indigo
- b- Light Indigo
- c- Medium Indigo
- d- Black
- e- Red
- f- Dark Indigo
- g- White
- h- Beige
- i- Yellow

Men's garments – T-shirt



- a- Extra Light Indigo
- b- Light Indigo
- c- Yellow
- d- Red
- e- White
- f- Beige
- g- Back

Men's garments – Chinos



- a- Beige
- b- Red
- c- Light Indigo
- d- Back

Men's garments – Linen shirt



a- White
b- Medium Indigo
c- Light Indigo

Printed shirt



Kid
Design 18



Women
Design 2



Men
Design 25

Print design...

Some of them were made by children in a school and we will put the name of the child with it

1



2



3



4



5



6



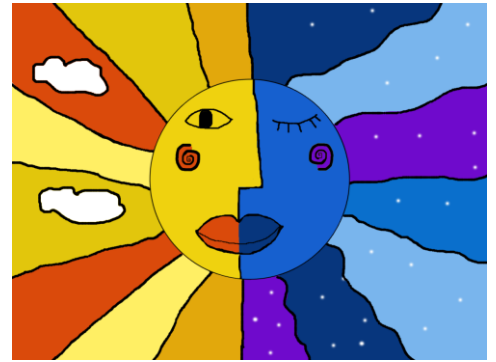
7



8



9



10



11



12



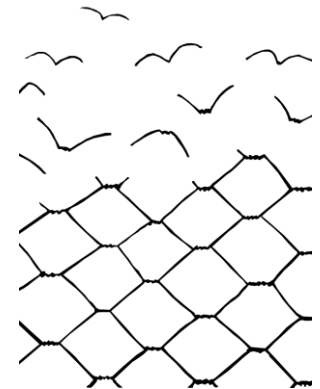
13



14

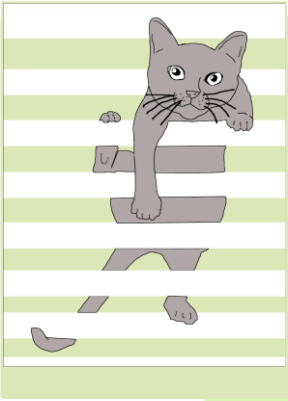


15



20

16



17



18



19



20



21



22

...AP TO N
...E PLANET WOULD LAST FL
...ING SERVICE THEY USE 32% LESS W
...IVING AT HOME USES 35% LESS F
... TH
...AD OF WASTING WATER ON HALF-FL
... OAL
... TAKE A BRISK SHOWER, NOT A LE
... AT
... CONTAINERS CAN BE REUSED, BUT WHEN BAF
... LIANCES WHEN YOU REPLACE C
... WEE P
... LE USH AND USE A PRACTIC
... THE F
... REUSABLES, THEY ARE
... LIKE
... RECYCLE YOUR CLAY
... A REC
... OMUM, ENVIRO
... ENT
... ONSERVABLE C
... ING POWDER
... ANTY
... BING DRYWIP
... AS AND
... SO ENERGY
... W W
... SK YO
... ILL FOR
... TION, TAKE THE PLUNGE A
... AN TY
... VE A COLLEAS
... A BAKERSHEK, C
... JANTITY IN INDI
... ITAIN GREAT UNLIT
... COFFEE GROUND
... IF B. USE THEM, C
... TION! "ALL TO USE
... YOU W LEE IN A
... OCCASION STORES
... TCHING THEM TO STANDBY LIGHT
... SHY. THEY FLUSH YOUR EYES IF REALLY
... LOW THAT'S MELLOW. IF IT'S BROWN FLUSH IT DOWN. EARTH IMPR
... CANDLELIGHT SAVING ELECTRICITY. INSULATE YOUR HOME. CARRY BATH ING
... THROUGH THE WALL UP TO 40%. BUY FROM COMPANIES WITH ECO-FRIENDL
... S. BOYCOTT THOSE WITHOUT. SOAK UP THE SUN. EYES IN BRITAIN. SOLAR PANELS CAN PRODUCE A
... BRING AMOUNT OF ENERGY. CLEAN THE BACK OF YOUR FRIDGE. DUSTY COILS CAN INCREASE
... OF CONSUMPTION BY 30%. AVOID AIR TRAVEL. IT PRODUCES THREE TIMES MORE CLIMATE CH
... RIBES THAN BAIL. PRETEND CHRISTMAS HAS COME EARLY. TURKEY IS WORN. BOTH ARE REUSABLE A
... PRODUCED IN THE UK. WHILE BRITISH-GROWN BRUSSEL BROUETS REDUCE THE WASTE YOU RE
... MANGETOUT. GROW PLANTS TO GIVE TO FRIENDS INSTEAD OF C
... PLANET WOULD LAST FOR ONLY 80 YEARS
... CATALYTIC CONVERTER. TO REDUCE INTRODUCES AND SHINING SERVICE. THEY USE 32% LESS ENERGY A
... EASY CURTAINS KEEP IN MORE HEAT IN WINTER. CHANGE DRIVING AT HOME USES 35% LESS FUEL THAN TO
... AND RELEASE FROM ALDREYD. A CARCINOMER. INSTEAD OF WASTING WATER ON HALF-EMPTY LOADS, TI
... PLASTIC BINGS FROM BAKES OF BEE. THEY ARE JUMPER. TAKE A BRISK SHOWER, NOT A LEISURELY BATH. T
... S UP THEMSELVES. BRING A "MAY" PARTY. AVOID FOOD CONTAINERS CAN BE REUSED. SANDWICH BAGS
... INSTEAD OF 24. REUSE ENERGY-EFFICIENT APPLIANCES WHEN YOU REPLACE OLD ONES. BUY C
... AND EIGHT TIMES P
... AND USE A FRACTION OF THE ENERGY

23



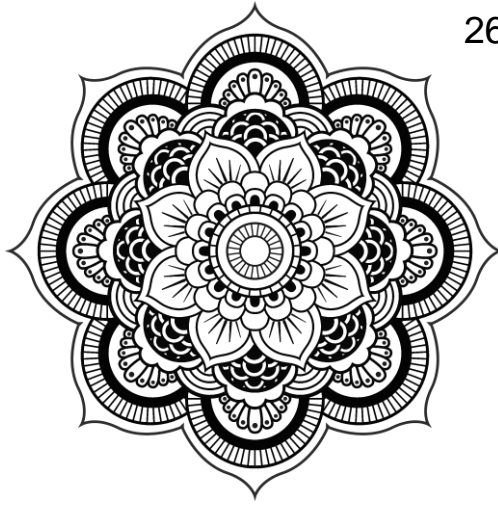
24



21

25

**LIB
BIO**



26



27

28



29

1947

30

